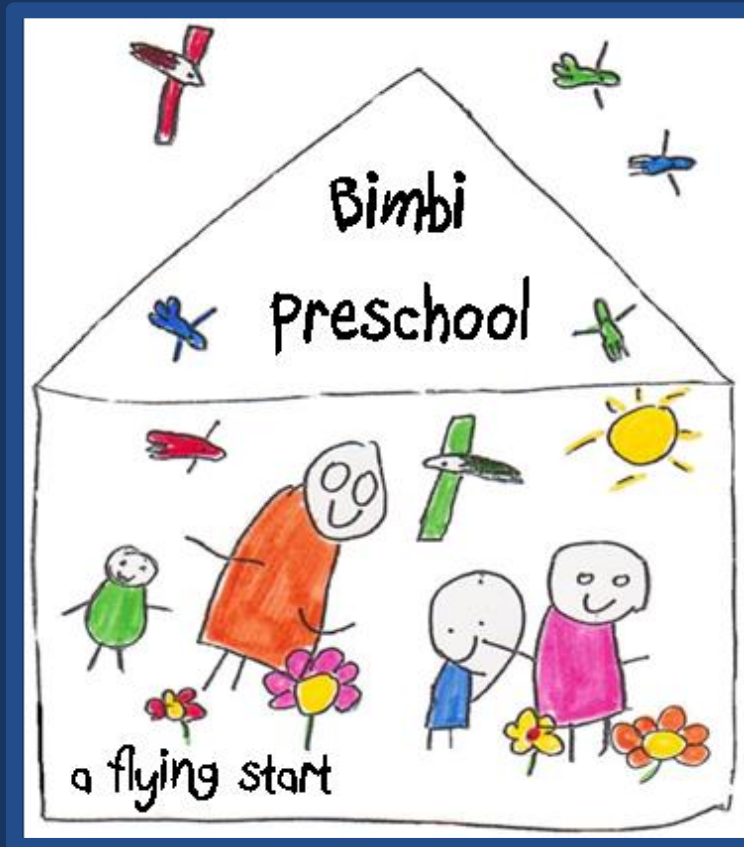


# A Guide to Bimbi Preschool



## Bimbi Preschool - Red Hill Public School

Parkhurst Street WAGGA WAGGA  
02 6931 1263



RED HILL  
PUBLIC SCHOOL

Principal: Tina Roworth Assistant Principal Preschool: Sally Longmore  
Educators: Justine Tonkin, Jess Honeysett, Colleen Atkinson, Alicia Green

# Contents

Welcome .....3

Philosophy.....4

Our Curriculum.....6

Daily Routine.....8

Important things to know.....9



# Welcome

We are delighted that you are joining us at Bimbi Preschool.

Bimbi is a part of Red Hill Public School and is open to children turning 4 before 31<sup>st</sup> July, the year before they attend Kindergarten at Red Hill Public School.

There are currently 2 sessions – Monday and Tuesday or Thursday and Friday, with an alternating Wednesday.

Bimbi Preschool is the only Department of Education Preschool in Wagga Wagga which places us with the unique ability to support the children of Bimbi to achieve a smooth transition to Red Hill Public School, as they are already a part of the vibrant and positive school community at Red Hill Public.

Bimbi Preschool embraces the Early Years Learning Framework as a part of the National Quality Framework. At Bimbi we believe children learn best through well planned and supported play, based on the interests and emerging skills of the children. Bimbi children learn in our well-resourced classroom and our large creative outdoor garden. Experienced and qualified Early Childhood Professionals deliver our innovative preschool program.

## National Quality Standard Assessment and Rating

Bimbi has been acknowledged for its achievements in Exceeding the National Quality Standards and striving for quality outcomes for children. In particular, collaborative partnerships with families, communities and support agencies and leadership and service management demonstrates the commitment to quality by the approved provider, educators, and staff.

### Overall Rating: Exceeding National Quality Standards (E)



**New photo here**

# Bimbi preschool philosophy

## At Bimbi we view children as:

- Independent
- Capable
- Resourceful
- Unique
- Interested
- Confident
- Playful
- Creative
- Social and friendly
- Willing to contribute
- Having their own voices and ideas

## Our preschool program reflects this through:

- Free and open play
- Interest based learning
- Valuing learning through play
- A flexible and inclusive program, responsive to the children's needs
- Discovery, problem solving, creativity, exploration, and investigation

## We value:

- A warm, friendly, and welcoming environment
- Natural play spaces that children can connect with, and feel comfortable in
- Responsive and respectful relationships with children, families, and the community
- The rich backgrounds and diversity which children and families bring with them.
- Learning through meaningful experiences
- The knowledge children, families and the community bring to the preschool, recognising everyone as an educator in children's lives.

*At Bimbi, we believe in giving children a flying start.*

We acknowledge the Wiradjuri people and recognise the strength, resilience, and capacity of Aboriginal People in our community.

We are proud of our preschool name – Bimbi. Bimbi is a Wiradjuri word meaning 'birds'. Our two preschool groups have been named after birds that often visit our garden, using the Wiradjuri words.



**Gugubarras (Kookaburras)**



**Gilaas (Galahs)**

Each day we acknowledge the presence of Wiradjuri people past and present and the land on which our preschool is on by singing our 'Welcome to Country' song with Jess leading the children. We also ask the children what they would like to acknowledge each morning after singing the song.



# Preschool Outcomes

At Bimbi Preschool we follow the Early Years Learning Framework – ‘Being, Belonging and Becoming’.

Across the year the preschool program works towards each child achieving the following outcomes:

1. Children have a strong sense of identity.
2. Children are connected with and contribute to their world.
3. Children have a strong sense of wellbeing.
4. Children are confident and involved learners.
5. Children are effective communicators.

We aim to achieve these outcomes through the following principles and practices:

## Principles:

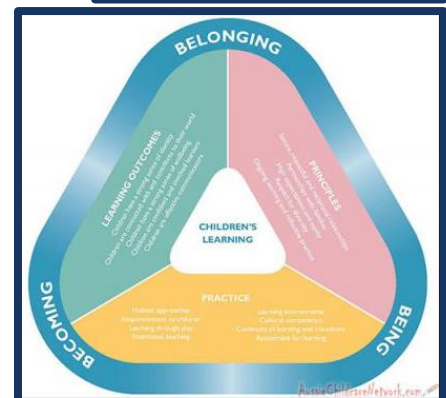
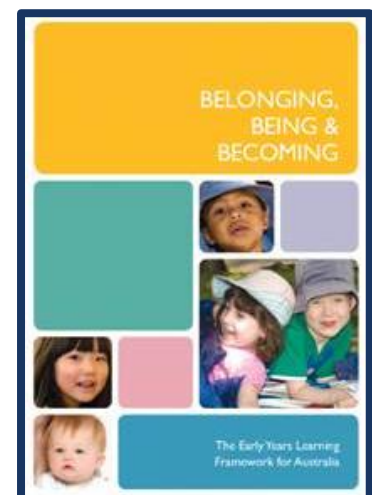
- Secure, respectful, and reciprocal relationships
- Partnerships
- High expectations and equity
- Respect for diversity
- Ongoing learning and reflective practice

## Practices:

- Holistic approaches
- Responsiveness to children
- Learning through play
- Intentional teaching
- Learning environments
- Cultural competence
- Continuity of learning and transitions
- Assessment for learning

If you would like to see the curriculum framework or have any questions, please ask an educator.

Development of these key components offers the very best start for your child at Bimbi Preschool.



## Red Hill Public School Preschool

has achieved the following ratings:

<b>Quality Area 1</b>	Educational program and practice RATING: <b>Exceeding</b> National Quality Standard (E)
<b>Quality Area 2</b>	Children's health and safety RATING: <b>Exceeding</b> National Quality Standard (E)
<b>Quality Area 3</b>	Physical environment RATING: <b>Meeting</b> National Quality Standard (M)
<b>Quality Area 4</b>	Staffing arrangements RATING: <b>Meeting</b> National Quality Standard (M)
<b>Quality Area 5</b>	Relationships with children RATING: <b>Meeting</b> National Quality Standard (M)
<b>Quality Area 6</b>	Collaborative partnerships with families and communities RATING: <b>Exceeding</b> National Quality Standard (E)
<b>Quality Area 7</b>	Leadership and service management RATING: <b>Exceeding</b> National Quality Standard (E)

The overall rating for a service is determined by the combination of the Quality Area ratings achieved. If a service is rated below the National Quality Standard in any Quality Area, the overall rating will reflect the lowest Quality Area rating. To achieve an overall rating of Exceeding National Quality Standard, a service needs to achieve Exceeding National Quality Standard in four or more Quality Areas of which two must be from Quality Area 1, Quality Area 5, Quality Area 6, or Quality Area 7.

**This service is rated overall at**  
**Exceeding National Quality Standard (E)**

NSW Department of Education and Communities

Date of issue: 29 June 2020

This service has been assessed against the *National Quality Standard for Early Childhood Education and Care and School Age Care*

and these ratings have been awarded in accordance with the *Education and Care Services National Law Act 2010*

and the *Education and Care Services National Regulations 2011*

# Bimbi Preschool Daily Routine

The Preschool routine outlines the general flow of the day, which is consistent to support the children's familiarity and sense of security. However, it is flexible to ensure we are responsive to the needs of the children and are able to follow or extend the children's interests.

<b>9.00</b>	Arrival Learning through play Fruito
<b>10.45</b>	Pack away – transition to group time
<b>11.00</b>	Yarning Circle Group time Language and Literacy focus
<b>11.30</b>	Hand washing – transition to lunch
<b>11.40</b>	Lunch
<b>12.15</b>	Learning through play
<b>1.45</b>	Pack away – transition to group time
<b>2.00</b>	Group time Music / movement / numeracy focus
<b>2.25</b>	Hand washing – transition to afternoon tea
<b>2.30</b>	Afternoon Tea
<b>2.50</b>	Pack away & prepare for home
<b>3.00</b>	Preschool closed

**New photo here**



# Preparing for the preschool day:

## Please bring:

- ✓ Healthy lunch and afternoon tea
- ✓ Piece of fruit
- ✓ Water bottle
- ✓ Change of clothes

## Please prepare your child by:

- ✓ Applying sunscreen **before** coming to preschool.



We are **unable to store lunch boxes or any of the children's food in the refrigerator**. Please pack your child's lunch box with an ice pack to keep it cool.

We are **not able to cook or reheat food**, this includes tinned food. Food will not be warmed, reheated or prepared by an Educator.



# Food that is not allowed

## Please **DO NOT** bring:

- Nut or nut products (peanut butter, Nutella spread etc.)
- Lollies – or items that look like lollies
- Roll ups and fruit strings / lollies
- Chocolate or chocolate biscuits
- Cakes / cupcakes
- Cordial / juice / fruit box – **water only** in water bottles
- Flavoured milk – water only



**If your child brings any of these food items, they cannot be consumed at preschool and the food items will be sent home.**

**If it is a special occasion, please talk to an educator about bringing in a cake or sometimes food.**

# Arrival and Departure routine

## Preschool opens at 9.00am

Parent sign in

Put your:

- \* Bag in locker
- \* Water bottle on bench
- \* Piece of fruit in fruit bowl

Help your child to sign in at the children's sign in table

Settle your child into play and make sure you say goodbye. If your child is having difficulties settling into play our educators can support, you.

**Pick up time is 2.30pm-3.00pm**

**Preschool closes at 3.00pm**

The children can be collected from preschool at any time that is convenient for you. For safety reasons the side gate into the preschool is unlocked at 2.30pm to allow time for children to be collected before preschool closes at **3.00pm**. If you need to access the preschool earlier, please enter through the school from Hawkes Place or ring ahead.

Children are not permitted on the premises outside of our opening hours (9.00am-3.00pm). If you cannot collect your child by 3.00pm please make alternative arrangements prior to 3.00pm and call the preschool to inform of who will be collecting your child. Educators will only release your child to people on your authority to collect list.



**New photo here**

# Other information

**Please apply sunscreen to your child **before** coming to preschool.**

## Clothing

Please send your child in comfortable clothing that is OK to get dirty. Please also pack a change of clothes, even if your child is fully toilet trained as we often have water or messy play which may require a change of clothes. No singlet tops are allowed due to our Sun Safety Policy.

Bimbi t-shirts are available from the school office for \$15.00.

All children are provided with a school hat at the beginning of the school year.

## Fees

You will be given an invoice at the start of each term for the whole term's fees. Fees are charged for the whole term; no discounts are applied for non-attendance. These are to be paid at the school office. The office staff can help you with payment plans if required.

## Our natural environment

We are proud of our beautiful garden and recognise the importance of children experiencing natural environments. Our garden is home to a variety of bugs and insects such as witchetty grubs, ants, mosquitoes, bees and more. All care is taken to prevent insect bites and stings however it is a risk to be considered when enrolling at Bimbi. If your child has allergies or special medical issues, please alert preschool staff as soon as possible so that safety plans can be developed.

## Complaints, compliments, and suggestions

If you have any issues at any time, please speak to one of our educators. If you prefer, we have a book located in the preschool foyer where you can record your concerns or feedback.

Formal complaints can be directed to the School Principal – Mrs Tina Roworth.

Alternatively, The **Department of Education** has provided access to an online complaints, compliments, or suggestions form (available using the following link):

<https://education.nsw.gov.au/your-feedback/complaint-compliment-suggestion-form>

## Toys from home

Please **do not** bring toys from home. We are well resourced with a wide range of educational toys for the children to explore. To ensure your toys are not lost or broken please leave them at home.

## Medical Conditions

Please inform the Educators if your child has or develops a medical condition (such as asthma, anaphylaxis, epilepsy etc). We will work with you to develop a communication and action plan to ensure your child's health and safety.

## Policies and Procedures

Bimbi Preschool has a folder with our localised procedures based on the NSW Department of Education Policies. The folder is available for you to read at any time. The Department of Education policies are also available on their website. [www.education.nsw.gov.au](http://www.education.nsw.gov.au)

## Quality Improvement Plan (QIP)

Each year the Bimbi Educators complete a QIP to self-assess our performance in delivering quality education and care and to plan future improvements. A copy of this is available in the preschool foyer. Any input or comments are appreciated.

## Kinderloop

We use Kinderloop as a communication tool with families and to document the children's learning. Upon enrolment to Bimbi, you will receive an email invitation to join our closed group. There is also an app which is a free download for ease of access.



**New photo here**

**New photo here**