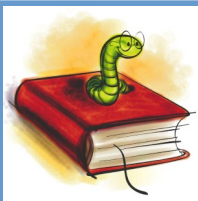


**Bimbi
Preschool
Reminder**
Enrolment applications are now due. Please ensure forms are completed & returned to the office so that your placement can be finalised.



**BOOK CLUB
DUE
24/10/13**



**TUESDAY
22ND OCTOBER
10AM-3PM
WAGGA CITY
LIBRARY**

www.grandparentsday.org.au

CANTEEN NEWS

SAUSAGE SIZZLE

Thursday 24th October

\$5.00

Sausage in bread

Fruit box & Ice-cream cone

Order with money into Canteen by Tuesday 22nd October



CHORDS FESTIVAL

Students from Tolland Public School will be performing on

Monday 21st October

at the Wagga Wagga Civic Theatre

CHORDS Festival Tickets for the event are on sale at the

Wagga Wagga Civic Theatre

Tickets are:- **\$16.00 single entry**

\$55.00 for family of 4 (2 adults 2 children)

\$10.00 Extra Child

COMMUNITY MEETING AT TOLLAND COMMUNITY GARDENS

When: Monday 28th October

Where: Tolland Community Gardens - Raye Street

Time: 10am

Why: We are seeking interest from Community to establish an outdoor learning space.

Contact: Louise Whitton RI TAFE on 6938 1237

or Email: louise.whitton@tafensw.edu.au

20% off all school uniforms @ **LOWES**-Thursday 24/10/13

Dates to Remember

Friday 18th October	Stage 2 Excursion — Riverina Environmental Education Centre
Monday 21st October	Chords Rehearsal & Performance
Thursday 24th October	Book Club Orders Due
Monday 28th October - Friday 8th November	Swim School Lessons

Our target this year

Attendance last week

Attendance this year



90%

87.1%

(Term 3 2013– 87.5%)



Principal
Matthew Gray

Assistant Principals
Kathryn Harriott
Rachel Linsell
Helen Nixon
Narelle Buete (Relieving)
Kate Fox (Relieving)

Instructional Leader
Tracey Smith

Tolland Public School
Hawkes Place
TOLLAND NSW 2650

Phone: 02 6931 1263
Fax: 02 6931 4312
E-mail: www.tolland-p.school@det.nsw.edu.au

Web Address:
www.tolland-p.schools.nsw.edu.au

Term Dates
Term 4 2013:
Tuesday
8th October 2013 —
Wednesday
18th December 2013

Tolland Public School

School Newsletter

We acknowledge the Wiradjuri people and recognise the strength, resilience and capacity of Aboriginal people in our community.

Week 2 Term 4

Tuesday 15th October 2013

Principal's Message



Dear parents,

Welcome Back! The staff at Tolland are looking forward to a fulfilling and rewarding Term 4 where students will continue to attain many skills. A calendar of events is available on the website and also attached to this newsletter for your reference. We look forward to seeing many of you at the numerous events throughout the term.

PBL

One of our school targets this year has been to build positive and engaging learning environments for all students through the implementation of the Positive Behaviour for Learning (PBL) program. The PBL philosophy aims to improve outcomes for all students by creating sustainable school-wide, classroom and individual systems of support that acknowledge the link between positive behaviour and enhanced learning environments.

Three core behavioural expectations are taught to all students through formal social skills instruction. These expectations are applied across all areas of the school. They are; **Respect, Responsibility and Care and Co-operation**. In understanding what these expectations are, how they apply to all areas of the school, and the clear consequences of not following these 'values', students gradually learn to regulate their own behaviours. In order to reinforce positive behaviours, students are rewarded regularly and acknowledged through the school merit systems and assemblies.

CHORDS (Choral and Dance Spectacular)

Our Yrs 3-6 choir have had their final cluster rehearsal last week and are excited about performing on Monday 21st October at the Civic Theatre. Tickets for the performance are on sale with tickets being \$16 each or \$55 for a family of 4 and \$10 for any extra children's tickets. There are only 460 seats available for the Monday night performance, so don't miss out.

Proud & Deadly Nominations

Our school has nominated students to receive awards in the upcoming Proud & Deadly Awards to be held at Mt Austin High School on the 14th of November. Areas for nominations include: Academic, Citizenship, Performing/Creative Arts, Sport, Student Leadership, Cultural, Encouragement, NAPLAN and Attendance. All nominations have been supported by our Aboriginal Education Committee.

Hats for Term 4

It has been pleasing to see so many students either wearing or purchasing buckets hats for the coming term. Over the past few weeks I have written about the importance of students (and staff) being Sun Safe during the warmer months. The office has just taken delivery of new hats, so there are plenty available in all sizes. Our **'No hat play under the COLA'** has come into force this week. If any parents have concerns about the purchase of hats, please contact me through the office and I will be more than happy to speak with you.

Have a great week.

Matthew Gray

"DANCE THROUGH THE DECADES"



It was fabulous to see well over 140 family and friends in the audience for our Dance Concert in the last week of Term 3. Mrs Linsell did a wonderful job organising the event with a big thank you to our dance teacher, Josh for all his hard work.. We look forward to holding the same event next year.



Legacy Badges

Some students from Tolland sold badges to commemorate Legacy Week at the end of last term.

Shoppers at Southcity were suitably impressed as we received a "thumbs up" in the Leader.

Thank you to Olivia Close, Mereoni Tuinakauvadra, Tabua Tuinakauvadra, Ella Kindleysides, Rhys Kennedy, Logan Kennedy and Mrs Dombrovski for this great effort.

