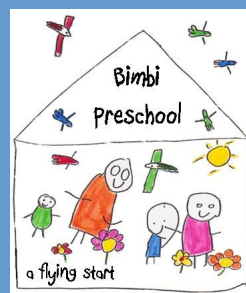


## IMPORTANT NOTICE

3-WAY INTERVIEWS with teachers, parents and students will be held in Weeks 4 & 5. Invitations will be sent home from individual classes.



## Bimbi Preschool Reminder

Enrolment applications are now due. Please ensure forms are completed & returned to the office so that your placement can be finalised.

## Reminder

Payment for the Stage 2 excursion to Borambola Sport and Recreation Centre is due on Tuesday 12th, November.

## Pizza News

Due to a change in the supplier of our Monday Pizza, only one variety will now be offered:

**Bangers and Beef**

**\$2 per slice or 3 for \$5.00**



**RECONCILIATION, HEALTH & CYCLING**  
Wednesday 6th November 12:00 pm  
Riverina Medical and  
Dental Aboriginal Corporation  
Edward St Wagga Wagga

**medicare local** MURRUMBIDGEE  
Come join us for a free lunch, a health check and cheer us on as we ride to Albury to help close the gap! Contact Murrumbidgee Medicare Local on 6923 3132 for details.

You can also meet us at Borambola Sport and Rec for morning tea at 10:00 am and then ride the final 25km to Wagga. Call 6923 5200 for details



## Travelling Places Introductory Workshop

Travelling Places is a series of community workshops on local culture, gathering knowledge and keeping it safe and accessible according to the community's own protocols. It introduces the new, accessible technologies Indigenous communities around the world are embracing, bringing Elders and Youth together towards the next generations of cultural leaders.

**When:** Monday 11th November, 2013  
9.30am - 5.00pm

**Where:** Community Learning Centre, Wagga Wagga City Library

**Further information contact:**  
Steve Miller, Museums & Galleries of NSW [stevem@mgnsw.org.au](mailto:stevem@mgnsw.org.au) or

Debbie Evans, Charles Sturt University  
0429 202 497

## Dates to Remember

Monday 28th October - Friday 8th November	Swim School Lessons
Friday 8th November	Naidoc Touch
Monday 28th October - Friday 8th November	3-Way Interviews
Wednesday 13th November	Crazy Hair Day

Our target this year	Attendance last week	Attendance this year
<b>90%</b>	<b>88.2%</b>	(Term 3 2013- 87.5%)



# Tolland Public School

## School Newsletter

We acknowledge the Wiradjuri people and recognise the strength, resilience and capacity of Aboriginal people in our community.

Week 5 Term 4

Tuesday 5th November 2013

**Principal**  
Matthew Gray

**Assistant Principals**  
Kathryn Harriott  
Rachel Linsell  
Helen Nixon  
Narelle Buete (Relieving)  
Kate Fox (Relieving)

**Instructional Leader**  
Tracey Smith

**Tolland Public School**  
Hawkes Place  
TOLLAND NSW 2650

Phone: 02 6931 1263  
Fax: 02 6931 4312  
E-mail:  
[tolland-p.school@.edu.au](mailto:tolland-p.school@.edu.au)

Web Address:  
[www.tolland-p.schools.nsw.edu.au](http://www.tolland-p.schools.nsw.edu.au)

**Term Dates**  
Term 4 2013:  
Tuesday  
8th October 2013 —  
Wednesday  
18th December 2013

## Principal's Message



Dear parents,

The term continues to move quickly with this week seeing the completion of the Swim School. The 70 students involved have been thoroughly enjoying their lessons and reports from staff present have been extremely positive.

Good luck to the Stage 3 students involved in NAIDOC Touch Competition which begins this week. They have been training hard with both Mr Fealy and Mr Pitchford.

## Proud and Deadly Awards

Next Thursday I will be accompanying a number of our Indigenous students to the Proud and Deadly Awards at Mount Austin HS. These awards acknowledge achievements of our students through sport, academic achievement, the arts and school attendance. Congratulations to all the students who will be receiving an award next Thursday. Students will be notified if they are receiving an award and will be given their permission note on Friday.

## Student Departures

As always at this time of year we begin to be notified by families who will be relocating to other towns and schools. If you know that your child/children will not be attending Tollard PS next year due to a change in employment or other circumstances, could you please contact me via the office. The school's staffing and funding allocations are based on student numbers and we are hoping to have an idea of what this may look like for 2014.

## Head Lice

Yes, these creatures are always with us. The only way to control the infestations is for every parent to be vigilant and regularly check their child's hair. It is easy to blame other children and I know it can be frustrating when re-infestations occur, but it is still up to every parent to take responsibility - the lice and eggs must be removed.

## Year 5 Students - Entry To Government Selective High Schools For Year 7 In 2015

Applications are required by mid November 2013 for parents of Year 5 students who wish their children to be considered for placement in Year 7 at a selective high school in 2015. Parents with internet access are requested to apply online. Online applications will be available from 15 October to 18 November. Application information is available on the Department's internet: [www.schools.nsw.edu.au/shsplacement](http://www.schools.nsw.edu.au/shsplacement)

If you do not have internet access, paper application forms are available from the school office. Paper applications must be returned to school by 18 November. Applicants may apply for a total of any four selective high schools. A complete list of selective high schools is available at: [www.schools.nsw.edu.au/schoolfind/types/shs\\_ahs\\_details.php](http://www.schools.nsw.edu.au/schoolfind/types/shs_ahs_details.php)

## Parent Survey

Attached to this newsletter is a link to a *Community Engagement* survey. If you open this newsletter via the school's website, you will be able to click on the link and be taken directly to the survey. It will only take about 5 minutes to complete but provides the school with valuable feedback to assist in planning for 2014. The link is <https://www.surveymonkey.com/s/QKKXQC5>. Alternately you can type this link into a search function on the internet and it will take you directly to the survey. If you have any issues with the link, a printed copy is available in the office.

Have a great week.

**Matthew Gray**

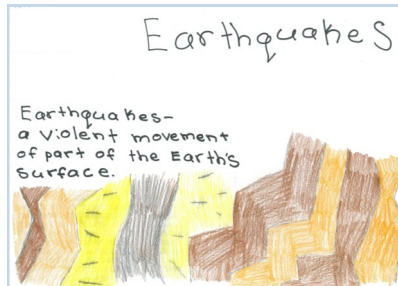
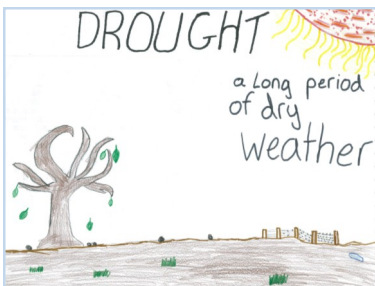
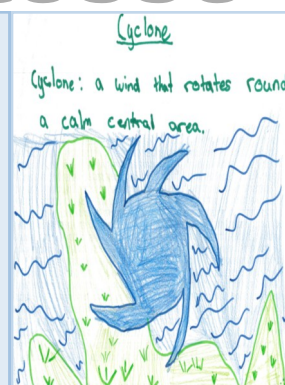




## RFF with Mrs Comtesse

This term students are studying the following topics during release from face to face time:-

- Early Stage 1, Stage 1 and 4-6L - "All Mixed Up"
- Stage 2 - British Colonisation
- Stage 3 - Natural Disasters



## Swim School

Week 1 of Swimming School is over. All children have represented our school well and have been attentive during swimming lessons. Thanks to the Council subsidy we have been able to offer places to many students at reduced prices.

Mrs Buete must be thanked for her work in organising this terrific opportunity for our students.

Please remember, a plastic bag for wet swimmers and a hair brush or comb. Children will be able to visit the kiosk on Friday.



### Level 6 Awards

Korshyn

Aaron

Shaeleen

### Level 7 Awards

Elizabeth

Justin

Isabelle

Toby

Mikayla

Tyrelle

Jai

Jack

### Bronze Awards

Toni

Caleb

Shari

Ethan

Latrell

Lochlan

James

Tylah

Lydia

James

Edward

Thomas

Keyarna

Meah

Bailey

Jayden

Ethan

Shakur

Sarah

### Silver Awards

Jenna

Danica

Tabua

Kayden

Shawn

Corey

Lachlan

Mason

Chelsea

Shaytaya

Jarna

Lili

Rhys

Rasheed

Kelissa

Noah

Shayne

Levi

### Gold Awards

Sarah

Sarah

Ella-Rose

Charlotte

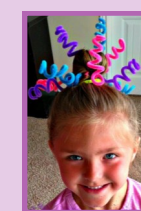
Charlotte

Mereoni



## CRAZY HAIR DAY

WEDNESDAY 13TH NOVEMBER



## 2014 KINDERGARTEN ORIENTATION

Parent Information sessions are to be held at Bimbi Preschool on:-

**Tuesday 12th November at 9.15am**

**Thursday 14th November at 9.15am**

Please bring birth certificate & immunisation records to confirm your enrolment.

**Come for morning tea, meet your**

**Kindergarten teachers and be prepared to start school in 2014.**

