


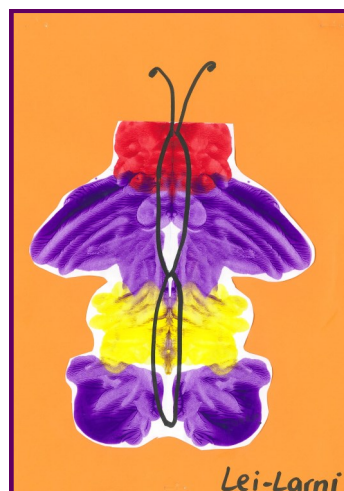


Week 11 Term 1			Thursday 7th April 2016	
Ribbon Winners				
Corbin O	Ashleigh B	Cody S	Southern W	Abby K
Noah G	Eliana B	Malachi G	Maya M	Briana M
Mason M	Leticia W	Cindel S	Tarisa C	Connor G
Jarnae T	Lei-Larni N	Nicholas S	Holly O	Ella W
Mohammad A	Corey P	Tasman C	Jackson H	Heather H
Kaed C	Violet W	Nathaniel G	Kaelani G	Evie A
Kakala U	Amogh B	Jonte K	Kaleel G	Charlotte S
Stephanie H	Taylor A	Ryan M	Bryce M	Thomas N
Zahra A	Harmony R	Caleb M	Jett P	Islah K
Chelsea C	Nathaniel H	Shanice A	Tyler S	Molly C
Ethan H	Isabella J	Charlie A	Issaiah B	Isla D
Laura H	Tyson N	Sophie W	Tyler L	
Kelissa K	Kyson W	Liam G	Joshua E	
Ellena L	Shayne S	Dante W	Maleek T	
100% Attendance Awards				
Neithan B	Alexander C	Ella H	Caitlyn P	Nicholas S
Cindel S	Sophie W	Mohammad A	Sasha D	Jonte K
Harmony R	Cody S	Leticia W	Noah G	Kaelani G
Kaleel G	Jackson H	Mason M	Blake S	Tyler S
Ethan H	Stephanie H	Abbigail S	Zahra A	Amelia C
Molly C	Malaki H	Heather H	Kelissa K	Ellena L
Charlotte S	Aidan W	Nathan C	Violet W	Fatema A
George B	Chelsea C	Tamsyn G	Clarrie H	
Home Reading Awards				
Club 25				
Nathaniel G				
Our target this year		Attendance last week		Attendance this year
92%		90.4%		91.9%

Week 11 Term 1			Thursday 7th April 2016		
 <h1>Tolland Public School</h1> <h2>School Newsletter</h2> <p>We acknowledge the Wiradjuri people and recognise the strength, resilience and capacity of Aboriginal people in our community.</p>					
<p>Dear families,</p> <p>It has been an amazing term full of many wonderful learning opportunities and experiences. It continues this week with the Year 2-6 students competing at the Cross Country carnival at Apex Park, Lake Albert and the K-2 students heading off to the Botanic Gardens for a picnic. Friday will see the conclusion of the term and all the staff and students will take a well-earned rest.</p> <p>The transition of students to new classes has gone extremely well, with 3/4H beginning today. Thank you to all the parents for your support and understanding during this time. Thank you also to the staff for their flexibility in accepting new roles for the remainder of the year.</p> <p>ANZAC Day</p> <p>ANZAC Day falls in Week 1 next term so we held our school ANZAC ceremony yesterday. Thank you to Mrs Buete and the school leaders for organising and running this special assembly. As always, it is important to stop and take time to reflect on the sacrifices that many Australian men and women made so that we enjoy living in an amazing country. Our school Leaders will be representing the school at the Anzac Day march by laying a wreath on Monday 25th April.</p> <p>Annual School Report</p> <p>The 2015 Annual School Report will be available on the school website by the end of the week. This report provides relevant information about the school throughout 2015. All families are encouraged to take a look at the report and reflect on the many achievements the school made last year. There will be copies available at the office if any parents are unable to access the internet and would like a copy.</p> <p>Staff Development Days</p> <p>Don't forget the first day of Week 1, Monday 25th April, next term is Anzac Day which is a public holiday. Tuesday 26th April has been designated as a Staff Development Day. The day will include staff updating their CPR and Anaphylaxis training, a focus on PBL and HOW2Learn.</p> <p>School for the students begins on Wednesday 27th April.</p> <p>Staff Changes</p> <p>As many of you are aware, Miss Eliza Shoemark has taken leave for the remainder of the year and Mr Mitch Fealy will teach Yr 5/6 for the remainder of the year. Ms Jenny Martin will take on the role of Feedback teacher K-6. We also welcome Miss Rochelle Harley as the new 3/4H teacher. Mrs Jenny Arnold will return from leave next term and we thank Mrs Whitney White for taking on the role of Learning and Support Teacher.</p> <p>I must say an enormous thank you to the staff for all their efforts this term. The dedication they show towards the students always reminds me how lucky your child is to be part of Tolland Public School.</p> <p>I wish you all a safe and restful break and look forward to seeing everyone back on Wednesday 27th April.</p> <p>Matthew Gray</p>			<p>Principal Matthew Gray</p> <p>Tolland Public School Hawkes Place TOLLAND NSW 2650 Phone: 02 6931 1263 Fax: 02 6931 4312 Email: tolland-p.school@det.nsw.edu.au</p> <p>Web address: www.tolland-p.school.nsw.edu.au</p>		
			Dates to Remember		
Friday			Cross Country Year 2 - 6 at Apex Park		
8 April			PBL Reward afternoon		
			Kinder / Year 1 Mini Cross Country at school		
			Botanic Gardens visit in the afternoon		
			Last day of Term 1		
Monday			ANZAC DAY PUBLIC HOLIDAY		
25 April					
Wednesday			First day of Term 2 Students return to school		
27 April					
Tuesday			P&C Meeting		
3 May					

1-2T CLASS NEWS

1/2T have been learning about symmetry and identifying things in our environment that are symmetrical. We did lots of folding and continuing of patterns to notice if things were symmetrical. We created these beautiful butterflies by folding a page, painting one side and folding again.



Charles Sturt University



Thanks to the services of the Charles Sturt University Dental Clinic, the students of Tolland Public School have been able to receive high-quality dental care again in 2016. Since continuing the relationship forged in 2015, our affiliation with the Dental Clinic has seen 36 students receive preventative and restorative dental care since Week 4 this term. To date, predominately Years 5 and 6 students have been treated and Year 4 students are the most recent patients. Our final clinic for Term 1 was Tuesday of this week, with services continuing in Term 2. Many thanks go to Jackie Ingram for her continued support and assistance with this program. Both Jackie and I are extremely proud of the positive reputation the students of Tolland Public School have created for our school when visiting the Dental Clinic.

Whitney White (Co-ordinator)

CROSS COUNTRY FRIDAY 8TH APRIL

- Primary students will travel to Apex Park
- Under 8yrs do a mini cross country at school



Riverina Medical and Dental Aboriginal Corporation are running a holiday program at -

TOLLAND COMMUNITY CENTRE

10.00AM TO 3.00PM

21st APRIL 2016

ARTS & CRAFTS

TOUCH FOOTY, LEAGUE TAG,

BASKETBALL

LUNCH WILL BE PROVIDED



STEWART HOUSE ENVELOPES DUE BY THE END OF TERM 1 (8/4/16)



OPEN CLASSROOMS

